

Anti-Alpha-actin Antibody
Rabbit polyclonal antibody to Alpha-actin
Catalog # AP60852**Specification**

Anti-Alpha-actin Antibody - Product Information

Application	WB, IHC
Primary Accession	P68032
Other Accession	P68033
Reactivity	Human, Mouse, Rat, Chicken, Bovine
Host	Rabbit
Clonality	Polyclonal
Calculated MW	42019

Anti-Alpha-actin Antibody - Additional Information**Gene ID** 70**Other Names**

ACTC; Actin, alpha cardiac muscle 1; Alpha-cardiac actin

Target/Specificity

Recognizes endogenous levels of Alpha-actin protein.

Dilution

WB~~WB (1/500 - 1/2000), IH (1/50 - 1/200)

IHC~~1:100~500

Format

Liquid in 0.42% Potassium phosphate, 0.87% Sodium chloride, pH 7.3, 30% glycerol, and 0.09% (W/V) sodium azide.

Storage

Store at -20 °C. Stable for 12 months from date of receipt

Anti-Alpha-actin Antibody - Protein Information**Name** ACTC1**Synonyms** ACTC**Function**

Actins are highly conserved proteins that are involved in various types of cell motility and are ubiquitously expressed in all eukaryotic cells.

Cellular Location

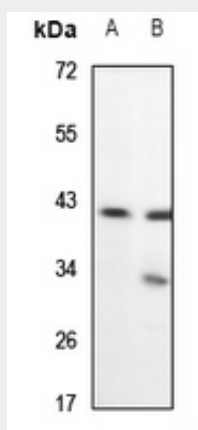
Cytoplasm, cytoskeleton.

Anti-Alpha-actin Antibody - Protocols

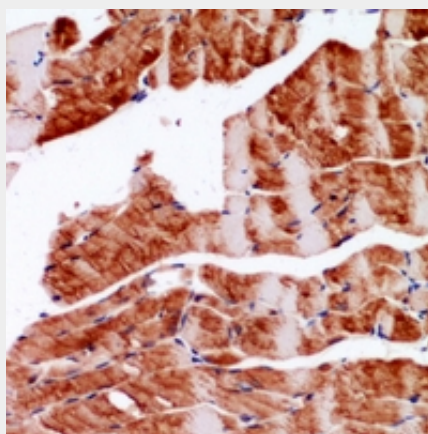
Provided below are standard protocols that you may find useful for product applications.

- [Western Blot](#)
- [Blocking Peptides](#)
- [Dot Blot](#)
- [Immunohistochemistry](#)
- [Immunofluorescence](#)
- [Immunoprecipitation](#)
- [Flow Cytometry](#)
- [Cell Culture](#)

Anti-Alpha-actin Antibody - Images



Western blot analysis of Alpha-actin expression in C6 (A), AML12 (B) whole cell lysates.



Immunohistochemical analysis of Alpha-actin staining in mouse skeletal muscle formalin fixed paraffin embedded tissue section. The section was pre-treated using heat mediated antigen retrieval with sodium citrate buffer (pH 6.0). The section was then incubated with the antibody at room temperature and detected using an HRP conjugated compact polymer system. DAB was used as the chromogen. The section was then counterstained with haematoxylin and mounted with DPX.

Anti-Alpha-actin Antibody - Background

KLH-conjugated synthetic peptide encompassing a sequence within the N-term region of human

Alpha-actin. The exact sequence is proprietary.